

Clutch Fitting Instructions



Tools required.
Flat blade
Screwdriver.



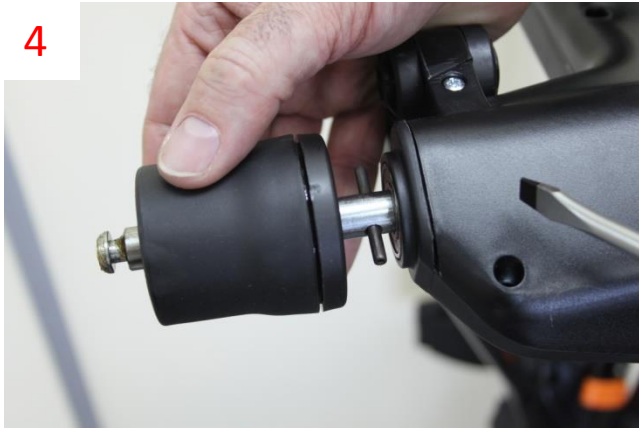
1/ Stand cart against a wall as shown to give easy access to the underneath of the cart.



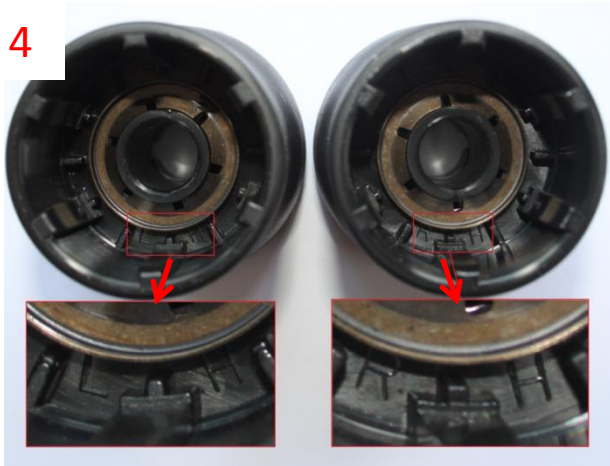
2/ Remove the wheels as required.



3/ Insert a flat blade screwdriver between the clutch and cart body and lever the clutch off the drive pin.



4/ Remove the clutch unit from the axle and replace it with the new part. Ensure you have the left and right hand units fitted to the correct side. See the picture below for the position of the identification marks.



5/ Align the slots in the clutch hub with the drive pin and push the clutch fully home.



6/ Push the clutch fully home as shown above.



7/ Finally refit the wheels.