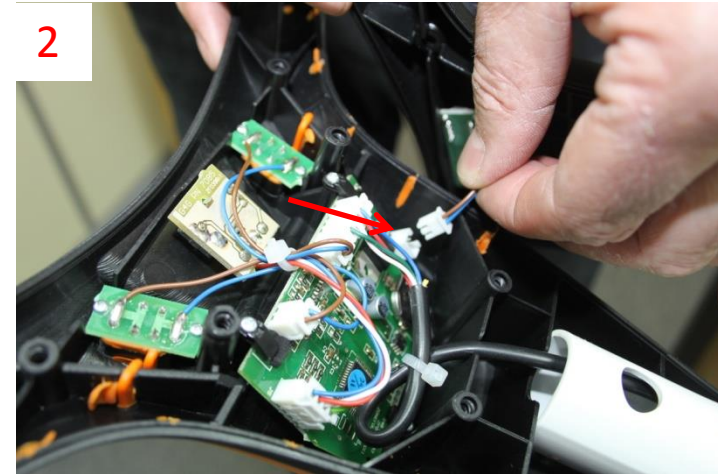


EZiCaddy Fitting Instructions to replace EZi5 handle housing

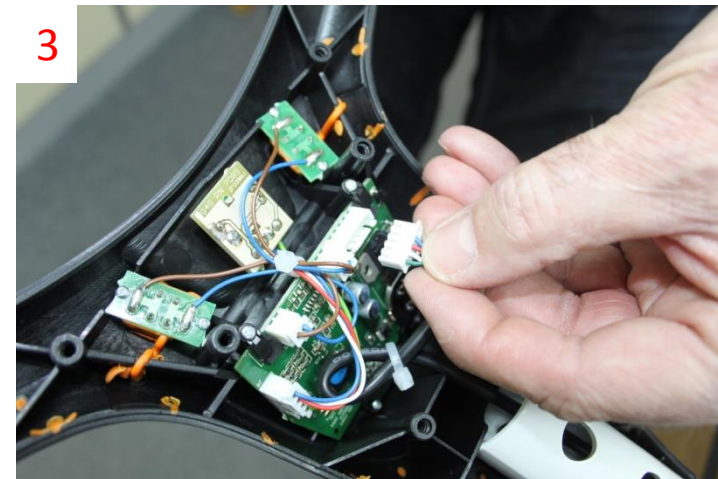


1/ 1/ Unfold the Trolley and position it upside down on the floor to get easy access to the underside of the handle and remove all 12 screws with a PZ2 screwdriver. *Take note of the position of the two longer screws as indicated *.

Tools required.
PZ 2 Screwdriver

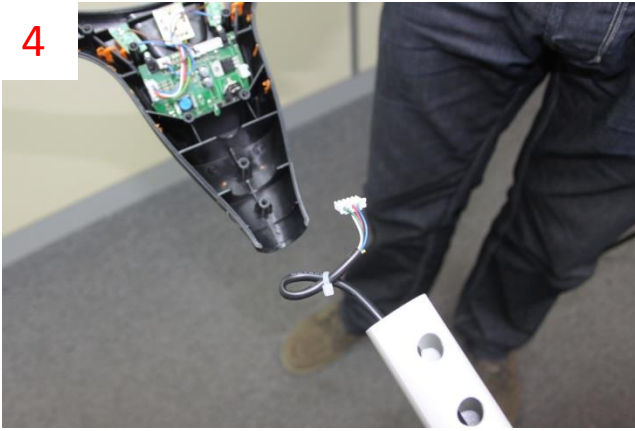


2/ Carefully disconnect the USB supply and put the handle lower moulding aside.



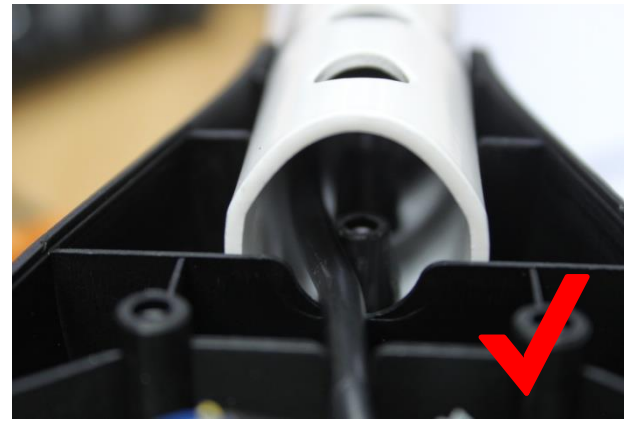
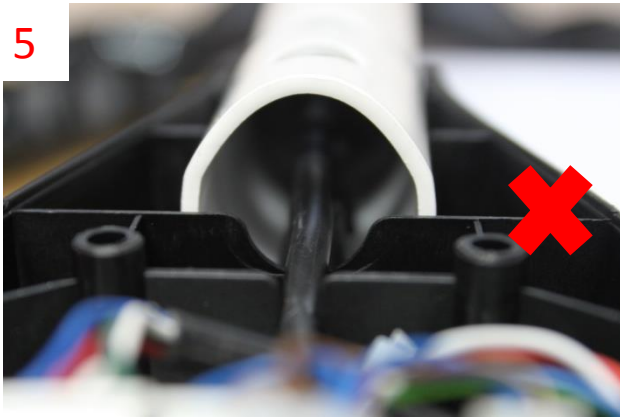
3/ Disconnect the main cable 5 pin connector from the LCD display PCB.

4



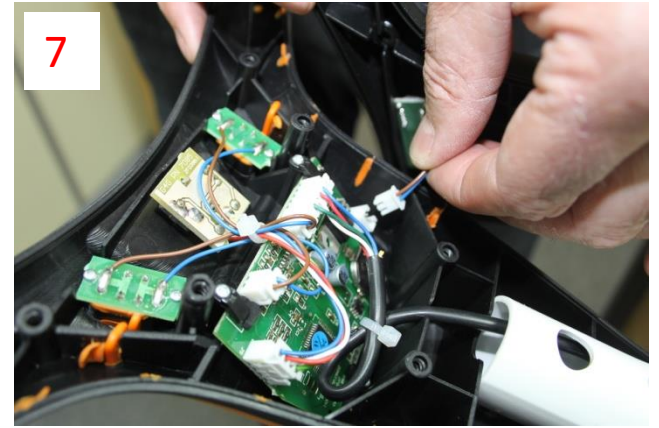
4/ Remove the handle from the main tube.

5



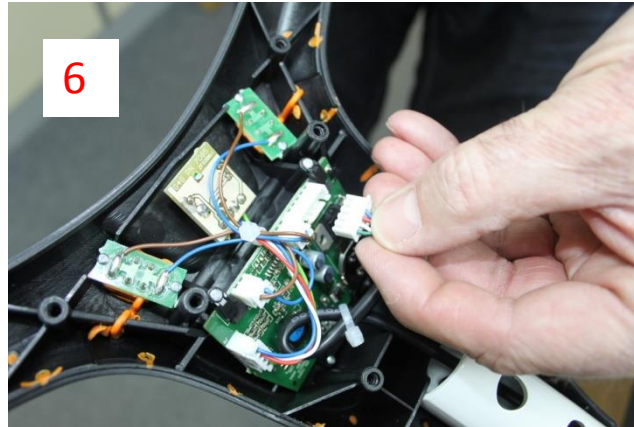
5/ Fit the handle onto the main tube and ensure the main wire is positioned to one side the two screw bosses.

7



7/ Reconnect the USB PCB connector

6



6/ Reconnect the main cable 5 pin connector.

8



8/ Refit the rear cover moulding. Ensure the two long screws go in the positions shown. Take care not over tighten the screws and that no wires are trapped between the two halves..

9



9/ Refit the remaining rear cover screws, again take care not to over tighten the screws. Well done you've finished. Enjoy your golf!

Short Case
Screws.
10 off

Long Case
Screws.
2 off

Encoder
nut,
washer
and
control
knob.

Display
PCB
screws and
clamps.